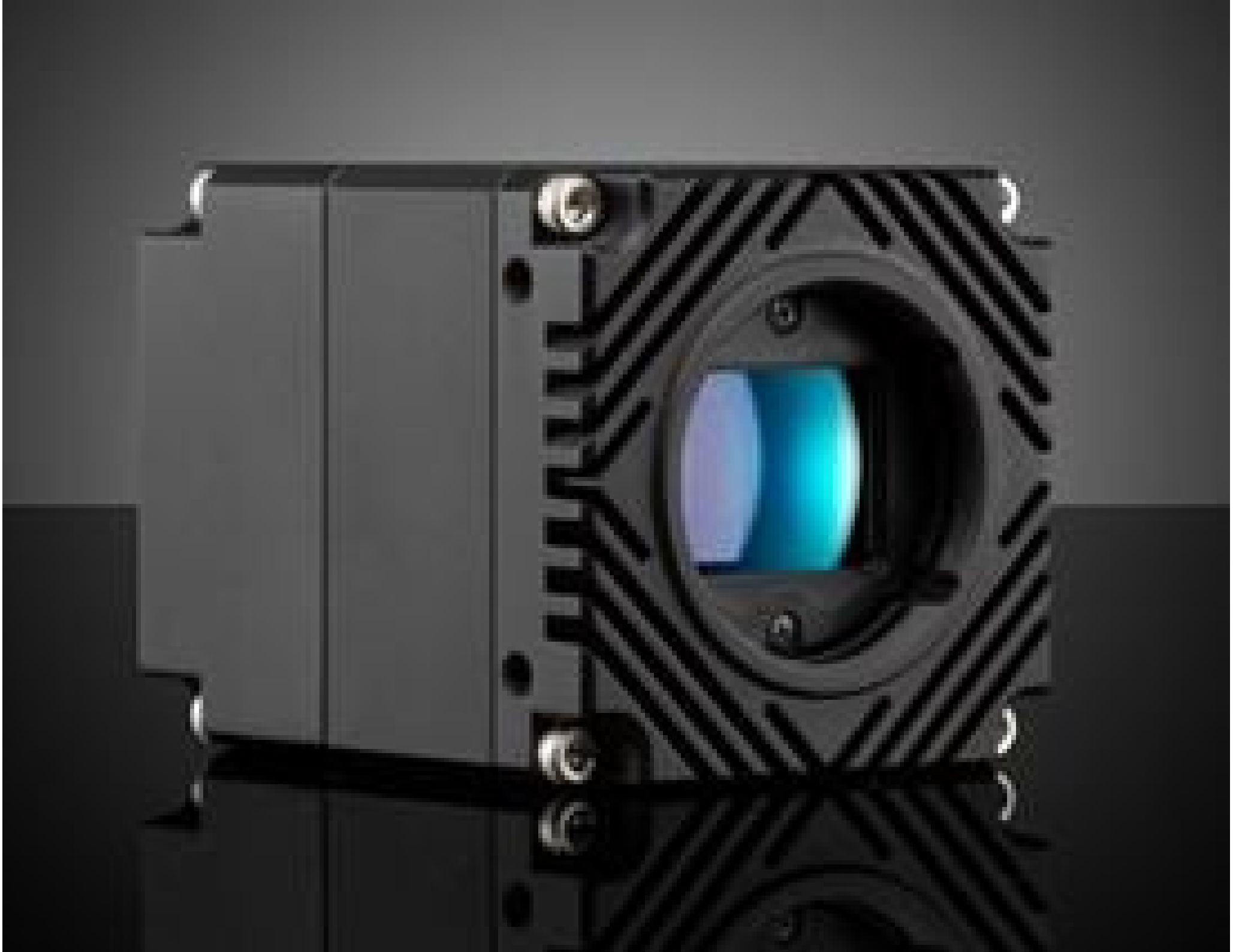


[See all 33 Products in Family](#)

LUCID Vision Labs Atlas™ ATL028S-MC, Sony IMX421, 2.8MP, Monochrome Camera (Recertified 05-P)

See More by [LUCID Vision Labs™](#)



LUCID Vision Labs Atlas™ Power over Ethernet (PoE) 5GBASE-T (5GigE) Cameras

Stock #17-108-RCD-05P RECERTIFIED **1 In Stock**

[Similar Cameras](#)

⊖ 1 ⊕ €900⁰⁰

ADD TO CART

Volume Pricing	
Qty 1+	€900,00 each
Need More?	Request Quote

⚠ Prices shown are exclusive of VAT/local taxes

Note: This item requires accessories for use | [Learn More](#)

Product Downloads

Spectrum:
Monochrome

General

Type:
Monochrome Camera

ATL028S-MC	Model Number:
Lucid Vision Labs	Manufacturer:
Atlas™	Camera Series:

Physical & Mechanical Properties

55 x 55 x 70 (excludes connectors and lens mount)	Dimensions (mm):
240	Weight (g):
Full	Housing:

Sensor

380MB	Image Buffer:
2/3"	Sensor Format:
2.80	Resolution (Megapixels):
173.00	Frame Rate (fps):
1,936 x 1,464	Pixels (H x V):
4.5 x 4.5	Pixel Size, H x V (µm):
8.71 x 6.59	Sensing Area, H x V (mm):
Sony IMX421	Imaging Sensor:
Progressive Scan CMOS	Type of Sensor:
Global	Shutter Type:
8/10/12 Bit	Pixel Depth:
10.3µs - 10s	Exposure Time:
71.87	Dynamic Range (dB):
GigE Vision v2.0	Machine Vision Standard:

Electrical

7 (External Power Supply) 8 (PoE)	Power Consumption (W):
-----------------------------------	-------------------------------

Hardware & Interface Connectivity

5GigE (PoE)	Interface:
5GigE, M12	Connector:
Power Supply Required and Sold Separately. USA: #18-364 Europe: #18-364 Japan: #18-364 Korea: Not Available China: #18-364	Power Supply:
1 opto-isolated input, 1 opto-isolated output, 2 non-isolated bi-directional ports	GPIOs:
Hardware Trigger (GPIO), Software Trigger, or PTP (IEEE 1588)	Synchronization:
Back Panel	Interface Port Orientation:
8-pin M8	GPIO Connector Type:

Threading & Mounting

C-Mount	Mount:
1/4-20 with Tripod Mount Adapter #13-751	Mounting Threads:

Environmental & Durability Factors

-20 to +55 **Operating Temperature (°C):**

-30 to +60 **Storage Temperature (°C):**

Regulatory Compliance

[View](#) **Certificate of Conformance:**

Product Details

- 5GBASE-T (5GigE) Ethernet Interface
- 2.8 to 31.4 Megapixel Sensors
- Compact 55 x 55 x 70mm Design
- TFL-Mount Compatible with [TECHSPEC® CA Series FFL Lenses](#)

LUCID Vision Labs Atlas™ Power over Ethernet (PoE) 5GBASE-T (5GigE) Cameras have a small footprint and feature large format, high resolution sensors with up to 31.4MP at 17.9fps. During manufacturing, their imaging sensors are actively aligned to minimize sensor tilt and rotation, resulting in sharp and crisp images even in the corners. The 5GigE Ethernet interface provides up to 5X faster speeds than GigE for applications requiring high bandwidth. These cameras also feature a TFL-Mount that is easily adaptable to F-Mount. LUCID Vision Labs Atlas Power over Ethernet (PoE) 5GBASE-T (5GigE) Cameras are ideal for industrial applications including [factory automation](#), autonomous robotics, and biometrics.