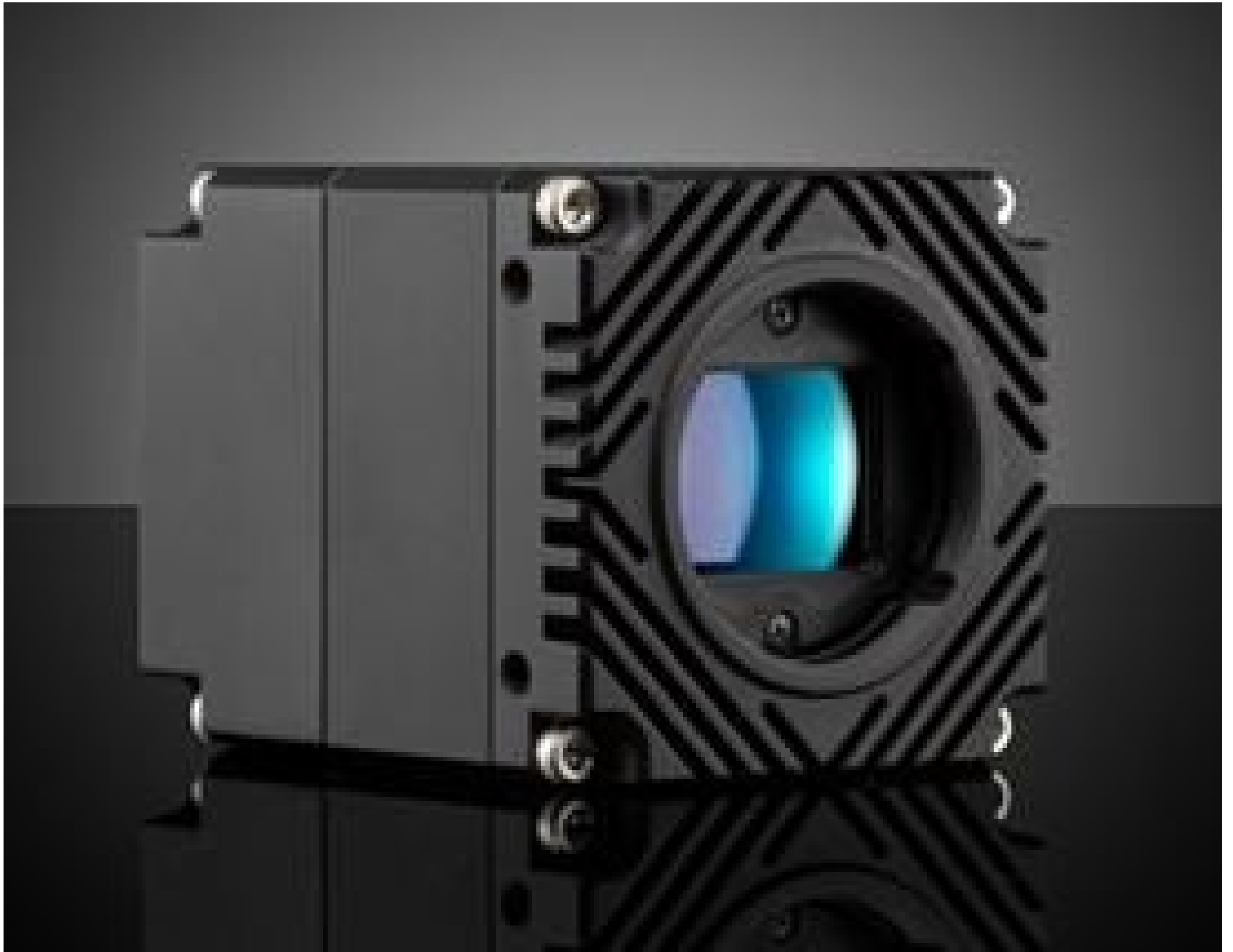


[See all 33 Products in Family](#)

# LUCID Vision Labs Atlas™ ATL314S-CT, Sony IMX342, 31.4MP, Color Camera

See More by [LUCID Vision Labs™](#)



LUCID Vision Labs Atlas™ Power over Ethernet (PoE) 5GBASE-T (5GigE) Cameras

Stock **#13-728** [CONTACT US](#)

⊖ 1 ⊕ €6.130<sup>00</sup>

**ADD TO CART**

Volume Pricing	
Qty 1+	€6.130,00 each
Need More?	<a href="#">Request Quote</a>

ⓘ Prices shown are exclusive of VAT/local taxes

## Product Downloads

Color **Spectrum:**

## General

Color Camera **Type:**

ATL314S-CT **Model Number:**

Lucid Vision Labs **Manufacturer:**

Atlas™

Camera Series:

## Physical & Mechanical Properties

**Dimensions (mm):**  
55 x 55 x 70 (excludes connectors and lens mount)

**Weight (g):**  
240

**Housing:**  
Full

## Sensor

**Image Buffer:**  
380MB

**Sensor Format:**  
APS-C

**Resolution (Megapixels):**  
31.40

**Frame Rate (fps):**  
17.90

**Pixels (H x V):**  
6,464 x 4,852

**Pixel Size, H x V (µm):**  
3.45 x 3.45

**Sensing Area, H x V (mm):**  
22.3 x 16.74

**Imaging Sensor:**  
Sony IMX342

**Type of Sensor:**  
Progressive Scan CMOS

**Shutter Type:**  
Global

**Pixel Depth:**  
8/10/12 Bit

**Exposure Time:**  
30µs - 10s

**Dynamic Range (dB):**  
70.7

**Machine Vision Standard:**  
GigE Vision v2.0

## Electrical

**Power Consumption (W):**  
8 (External Power Supply)  
8.5 (PoE)

## Hardware & Interface Connectivity

**Interface:**  
5GigE (PoE)

**Connector:**  
5GigE, M12

**Power Supply:**  
Power Supply Required and Sold Separately:  
USA: [#18-364](#)  
Europe: [#18-364](#)  
Japan: [#18-364](#)  
Korea: Not Available  
China: [#18-364](#)

**GPIOs:**  
1 opto-isolated input, 1 opto-isolated output, 2 non-isolated bi-directional ports

**Synchronization:**  
Hardware Trigger (GPIO), Software Trigger, or PTP (IEEE 1588)

**Interface Port Orientation:**  
Back Panel

**GPIO Connector Type:**  
8-pin MB

## Threading & Mounting

**Mount:**  
TFL-Mount

**Mounting Threads:**  
¼-20 with Tripod Mount Adapter [#13-751](#)

## Environmental & Durability Factors

**Operating Temperature (°C):**  
-20 to +55

-30 to +60

Storage Temperature (°C):

---

## Regulatory Compliance

[View](#)

Certificate of Conformance:

---

## Product Details

- 5GBASE-T (5GigE) Ethernet Interface
- 2.8 to 31.4 Megapixel Sensors
- Compact 55 x 55 x 70mm Design
- TFL-Mount Compatible with [TECHSPEC® CA Series FFL Lenses](#)

LUCID Vision Labs Atlas™ Power over Ethernet (PoE) 5GBASE-T (5GigE) Cameras have a small footprint and feature large format, high resolution sensors with up to 31.4MP at 17.9fps. During manufacturing, their imaging sensors are actively aligned to minimize sensor tilt and rotation, resulting in sharp and crisp images even in the corners. The 5GigE Ethernet interface provides up to 5X faster speeds than GigE for applications requiring high bandwidth. These cameras also feature a TFL-Mount that is easily adaptable to F-Mount. LUCID Vision Labs Atlas Power over Ethernet (PoE) 5GBASE-T (5GigE) Cameras are ideal for industrial applications including [factory automation](#), autonomous robotics, and biometrics.

---