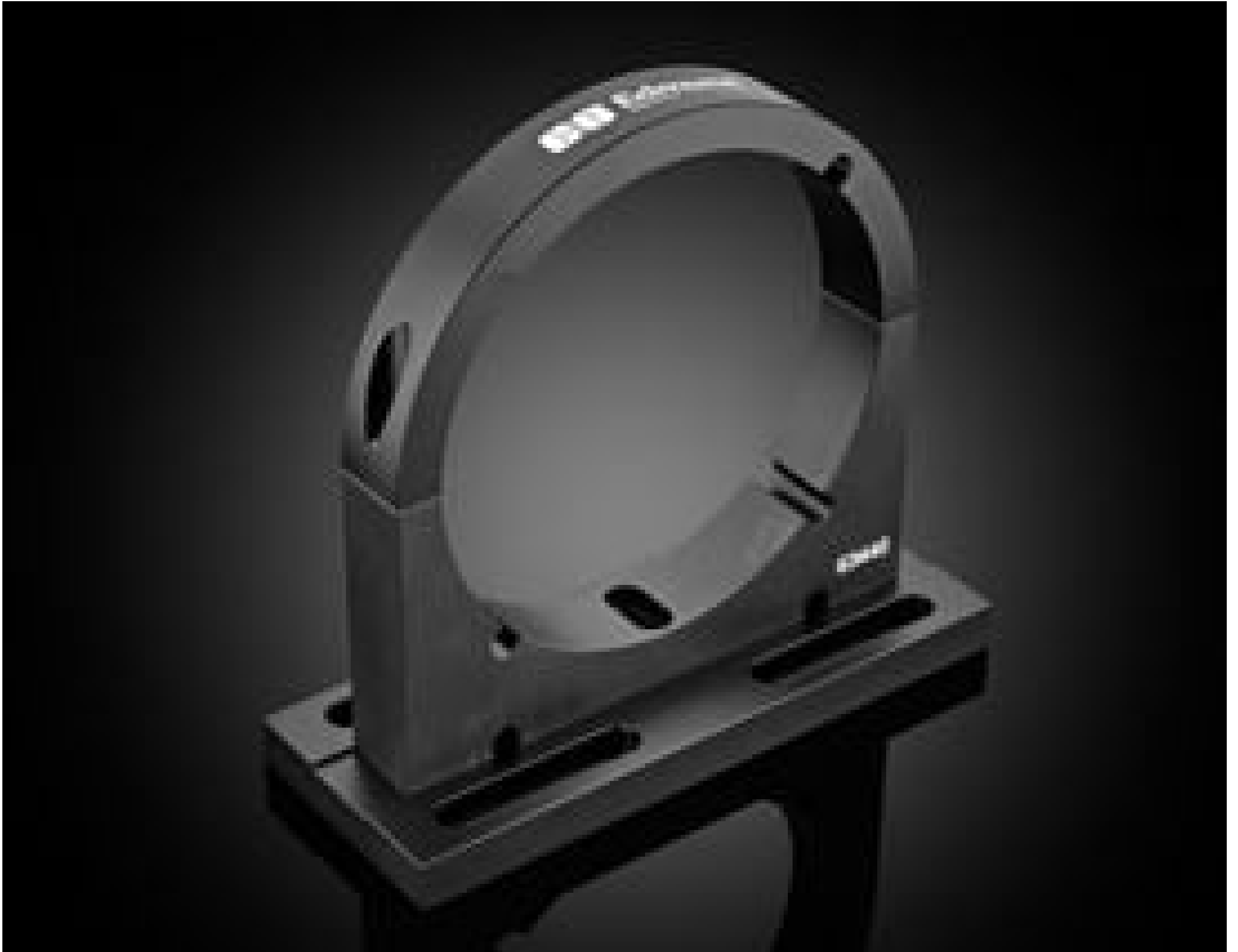


[See all 22 Products in Family](#)

**TECHSPEC® Mounting Clamp, 138.6mm Inner Diameter**



#63-440: Mounting Clamp, 138.6mm Inner Diameter

Stock **#63-440** **12 In Stock**

⊖ 1 ⊕ €440<sup>00</sup>

**ADD TO CART**

Volume Pricing	
Qty 1+	€440,00 each
Need More?	<a href="#">Request Quote</a>

ⓘ Prices shown are exclusive of VAT/local taxes

Product Downloads

**General**

Lens Accessory **Type:**

**Physical & Mechanical Properties**

138.6 **Inner Diameter (mm):**

**Optical Properties**

VS **Lens Wavelength Range:**

## Regulatory Compliance

Certificate of Conformance:

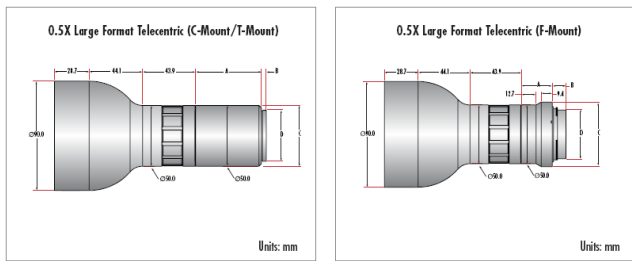
[View](#)

## Product Details

- High Resolution f/6 Bi-Telecentric Lens for Measurement
- Up to 35 MegaPixels, 2.8µm Pixel Size Sensors
- APS-C, C-Mount, T-Mount, F-Mount Telecentric Lens
- Magnification from 0.28X to 1.7X

TECHSPEC® PlatinumTL™ Telecentric Lenses are designed for semiconductor and electronics inspection, measurement, and gauging applications. The precision designs feature high telecentricity (<0.1°), low distortion (<0.1%), and high light throughput with an adjustable aperture that achieves f/6 when fully open. Capable of supporting large format 28.7mm diagonal sensors, these lenses are compatible with the Sony IMX342 APS-C sensor and other similar format sensors such as the Sony IMX530. TECHSPEC® PlatinumTL™ Telecentric Lenses produce unparalleled levels of contrast yielding maximum image quality with the highest degree of measurement accuracy. These lenses are suitable for high vibration environments and feature a removable recessed set screw for securing the iris in place.

## Technical Information



Description		Stock No.	Flange	Length (A)	Front Diameter (B)	Back Diameter (C)
0.28X	C-Mount	<a href="#">#62-933</a>	17.5mm	230.8mm	60.5mm	33.5mm
0.5X	C-Mount	<a href="#">#62-932</a>	17.5mm	174.9mm	50mm	33.5mm
1.7X	C-Mount	<a href="#">#63-232</a>	17.5mm	189.5mm	60mm	46mm
0.28X	F-Mount	<a href="#">#62-922</a>	46.5mm	167.6mm	138.6mm	55mm
	M42 x 1.0	<a href="#">#62-923</a>	6.56mm	208.5mm	138.6mm	50mm
	M42 x 1.0	<a href="#">#62-924</a>	19.53mm	195.5mm	138.6mm	50mm
0.5X	F-Mount	<a href="#">#62-912</a>	46.5mm	143mm	90mm	55mm
	M42 x 1.0	<a href="#">#62-913</a>	6.56mm	184mm	90mm	50mm
	M42 x 1.0	<a href="#">#62-914</a>	19.53mm	171.1mm	90mm	50mm
0.9X	F-Mount	<a href="#">#62-902</a>	46.5mm	170.8mm	65mm	55mm
	M42 x 1.0	<a href="#">#62-903</a>	6.56mm	210.7mm	65mm	53mm
	M42 x 1.0	<a href="#">#62-904</a>	19.53mm	197.8mm	65mm	53mm

