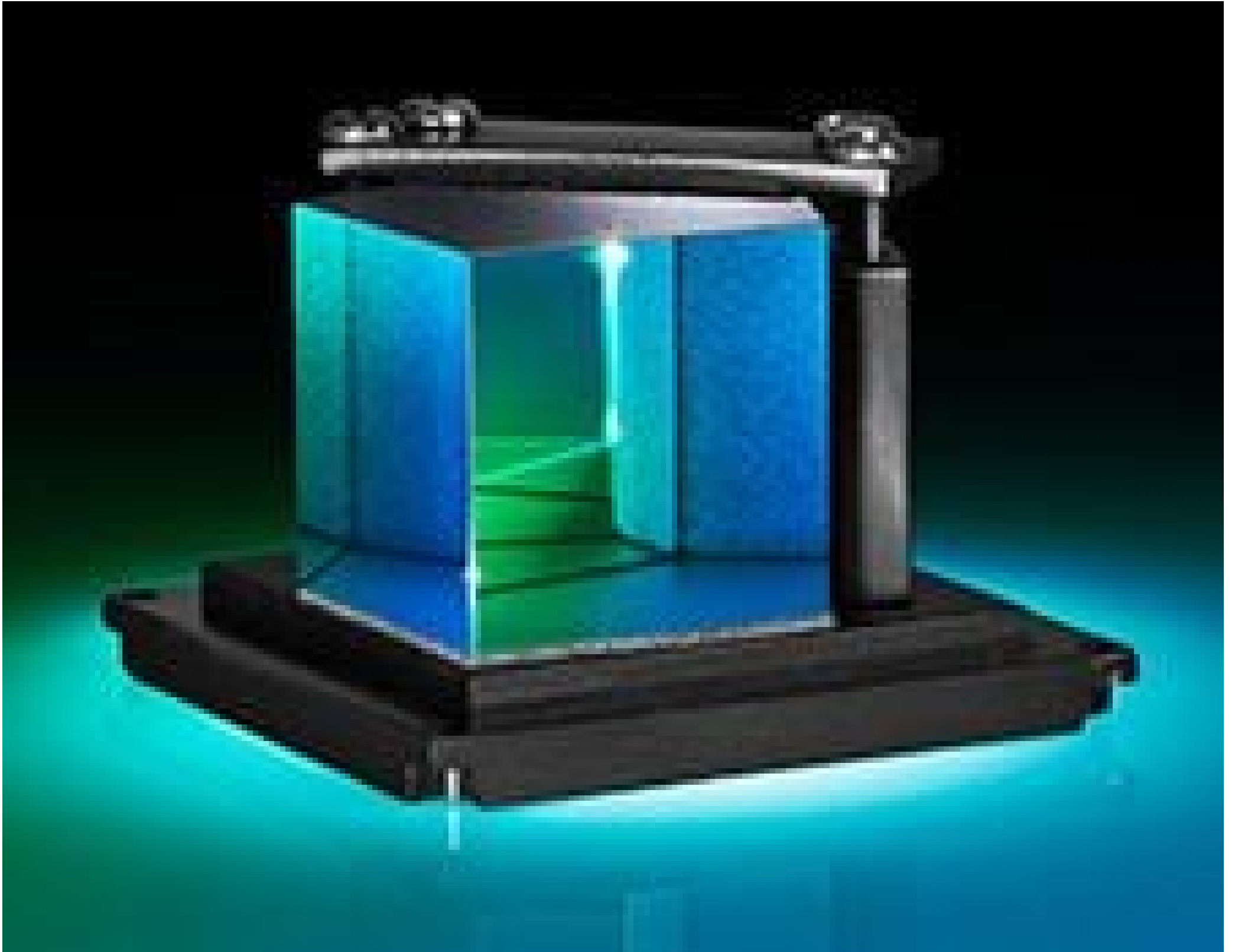
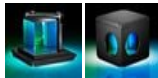


**TECHSPEC® Penta Prism in C-Mount Cube**



#53-401, Penta Prism in C-Mount Cube (Case Removed)



Stock **#53-401** [CONTACT US](#)

⊖ 1 ⊕ €417<sup>00</sup>

**ADD TO CART**

Volume Pricing	
Qty 1-4	€417,00 each
Qty 5-9	€368,00 each
Qty 10-25	€338,70 each
Need More?	<a href="#">Request Quote</a>

ⓘ Prices shown are exclusive of VAT/local taxes

Product Downloads

**General**

Penta Prism **Type:**

**Physical & Mechanical Properties**

38.0	<b>Extension Length (mm):</b>
±0.10	<b>Dimensional Tolerance (mm):</b>
Protective as needed	<b>Bevel:</b>
Housing: Black Anodized Aluminum	<b>Construction:</b>
25.00	<b>Length of Legs (mm):</b>

## Optical Properties

MgF <sub>2</sub> & Aluminized	<b>Coating:</b>
<a href="#">N-BK7</a>	<b>Substrate:</b> <input type="checkbox"/>
60-40	<b>Surface Quality:</b>
3	<b>Angle Tolerance (arcmin):</b>
Right-Handed	<b>Image Orientation:</b>
Entrance/Exit Faces: R <sub>avg</sub> ≤ 1.75% @ 400 - 700nm Reflecting Surfaces: R <sub>avg</sub> > 85% @ 400 - 700nm w/Black Overpaint	<b>Coating Specification:</b>
90	<b>Ray Deviation (°):</b>
400 - 700	<b>Wavelength Range (nm):</b>
3.00	<b>Power (fringes) @ 632.8nm:</b>
0.25	<b>Irregularity (fringes) @ 632.8nm:</b>

## Threading & Mounting

1/4-20	<b>Mounting Threads:</b>
C-Mount (1" x 32 TPI)	<b>Thread Type:</b>

## Regulatory Compliance

<a href="#">Compliant</a>	<b>RoHS 2015:</b>
<a href="#">View</a>	<b>Certificate of Conformance:</b>
<a href="#">Compliant</a>	<b>Reach 251:</b>

## Product Details

- Ray Deviation of 90°
- Right Handed Image
- Ideal for Visual/ Video Applications
- Easily Integrates with Our [C-Mount Components](#)

Designed for use with C-mount compatible hardware, our TECHSPEC® C-Mounted Penta Prism is quickly and easily integrated. A [TECHSPEC® N-BK7 Penta Prism](#) is fixed securely within a black anodized aluminum housing with two female C-mount apertures. Applications include space-restricted visual/video imaging systems requiring ray deviation of 90°. Entrance and exit faces (at the apertures) are anti-reflection coated to maximize efficiency and reduce the effect of double-images. A 1/4-20 tapped hole in the base permits post mounting.

Penta prisms are five-sided prisms featuring a ray deviation of 90° and a right handed image. The reflecting surfaces are aluminized for increased efficiency. Slight movement of the prism does not affect the true right angle at which light rays are reflected, making a penta prism the ideal optical tool for defining a right angle in an optical system.

## Technical Information

