

[All Products](#) / [Cameras](#) / [Gigabit](#)
/ [IDS Imaging uEye Warp10 10Gi](#)

[See all 23 Products in Family](#)

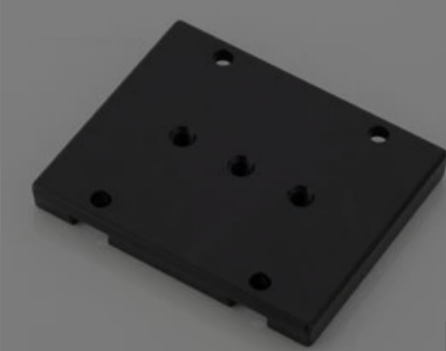
Tripod Adapter

See More by [IDS Imaging Develop](#)

Please select your shipping country to view the most accurate inventory information, and to determine the correct Edmund Optics sales office for your order.

Select Your Country/Region: European Union

Submit



Tripod Adapter for uEye Warp10

Stock #28-738 **1 In Stock**

1

€59⁰⁰

ADD TO CART

Volume Pricing	
Qty	€59,00
1+	each
Need More?	Request Quote

Prices shown are exclusive of VAT/local taxes

Product Downloads

[User Manual](#) [Software](#)

General

Model Number: AL00099

Manufacturer: IDS Imaging Development Systems

Regulatory Compliance

RoHS 2015: **Compliant**

Certificate of Conformance: [View](#)

REACH 241: **Compliant**

Product Details

- 10GBASE-T (10GigE) Ethernet Interface, 10X Faster than GigE
- Up to 12.3MP Resolution with Framrates up to 98fps
- Compatible with 1GigE, 2.5GigE and 5GigE Interfaces

IDS Imaging uEye Warp10 10GigE Cameras are capable of providing high quality, reliable image transfers at cable lengths of up to 100m on CAT6A or 40m on CAT5e. These global shutter cameras offer up to 12.3MP resolution. The 10GigE Ethernet interface provides up to 10X faster speeds than GigE for framerates up to 98fps for applications requiring high bandwidth. IDS Imaging uEye Warp10 10GigE Cameras are backwards compatible with existing 1GigE, 2.5GigE or 5GigE interfaces and will adjust their speed automatically. These cameras are ideal for machine vision, metrology, electronics inspection, and sports/motion analysis applications. These GeniCam compliant cameras are designed for the **IDS Peak software** but are compatible with most other GeniCam software protocols.

Accessories

Note: Compatible accessories for individual stock numbers may vary. If unsure about which accessories work with your products, please contact us [here](#).

	Title	Compare	Stock Number	Price	Buy
MORE+	Power Over Ethernet (PoE) Single Port injector		#68-469	€66,00 Request Quote	2 In Stock <input type="text" value="1"/>
MORE+	I/O Standard Lockable Cable, 5m		#28-728	€73,00 Request Quote	1 In Stock <input type="text" value="1"/>

	Title	Compare	Stock Number	Price	Buy
MORE+	I/O Standard Lockable Cable, 3m		#28-729	€61,00	1 In Stock <input type="text" value="1"/>
MORE+	I/O Standard Lockable Cable, 3m		#28-729	€61,00	1 In Stock <input type="text" value="1"/>
MORE+	GigE, patch cable Cat6, dragchain, screwable, 5m		#28-732	Request Quote	1 In Stock <input type="text" value="1"/>
MORE+	GigE, patch cable Cat6, dragchain, screwable, 5m		#28-733	€149,00 Request Quote	1 In Stock <input type="text" value="1"/>
MORE+	GigE, patch cable Cat6, dragchain, screwable, 10m		#28-734	€191,00 Request Quote	1 In Stock <input type="text" value="1"/>
MORE+	Active Heat Sink for uEye Warp10		#28-737	€312,00 Request Quote	CONTACT US <input type="text" value="1"/>
MORE+	Tripod Adapter for uEye Warp10		#28-738	€59,00 Request Quote	1 In Stock <input type="text" value="1"/>

Please select your shipping country to view the most accurate inventory information, and to determine the correct Edmund Optics sales office for your order.

Select Your Country/Region:

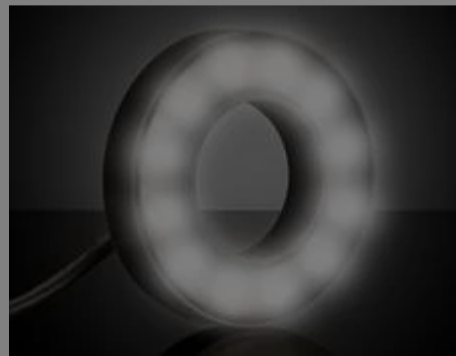
Related Products



IDS Imaging Cameras



Imaging Lenses



Machine Vision Lighting



IDS Imaging uEye+ CP/XCP/SE USB3 Cameras

Frequently Purchased Together



#68-469 - Power Over Ethernet (PoE) Single Port injector
€66,00



#87-535 - 0.5X - 1.0X M Series Non-Telecentric Lens
€650,00



#88-386 - 0.5X - 1.0X VariMagTL™ Telecentric Lens
€1.630,00



#28-725 - IDS GV-79LOWP-C-HQ, 10GigE, 1/1.1" Color Camera
€3.245,00