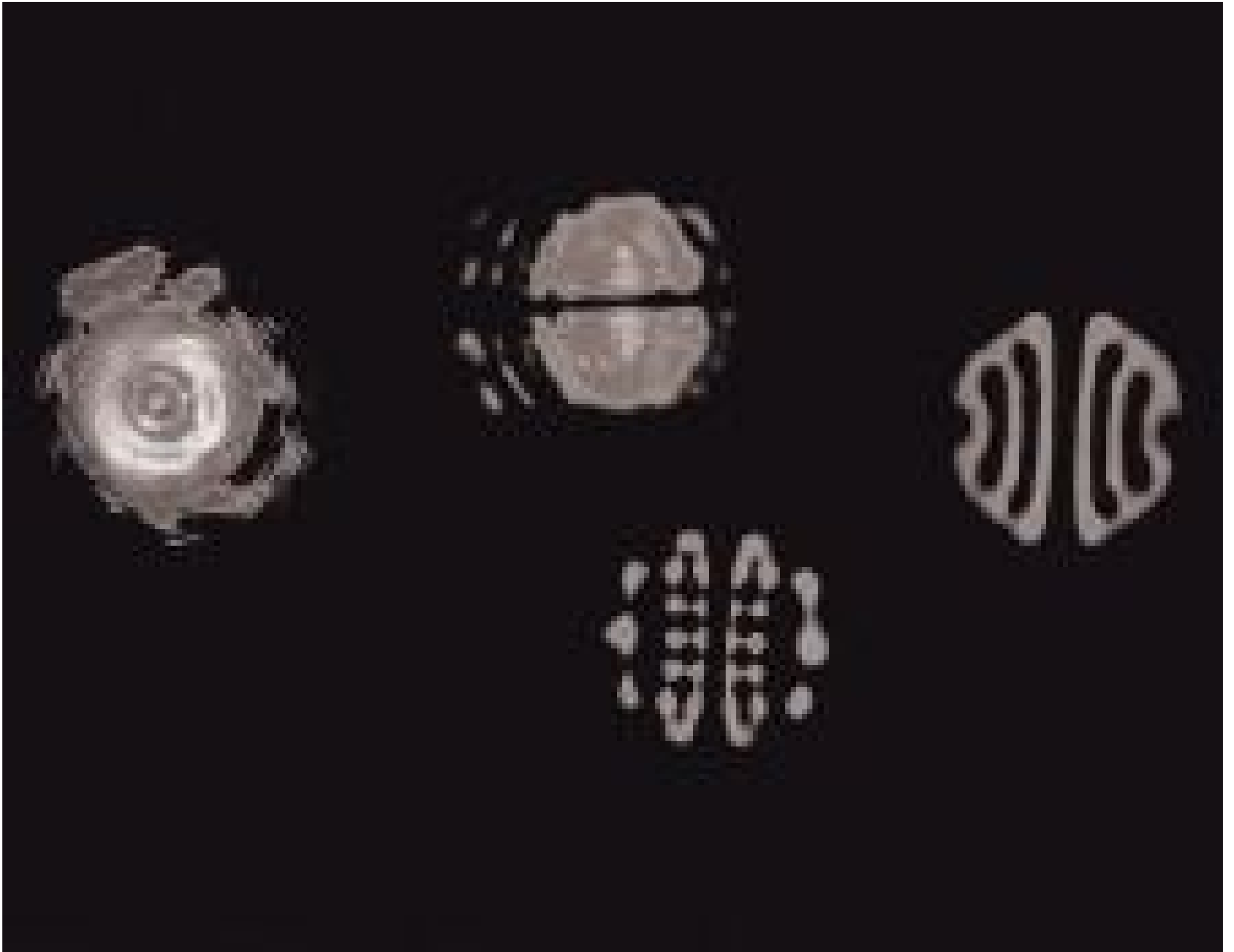


ZAP-IT® Laser Alignment Paper, 2 x 5", Box of 20 Sheets



Stock #15-825 **20+ In Stock**

- 1 + €63.⁰⁰

ADD TO CART

Volume Pricing

Qty 1-5	€63,00 each
Qty 6-24	€57,00 each
Need More?	Request Quote

ⓘ Prices shown are exclusive of VAT/local taxes

Product Downloads

SPECIFICATIONS

General

Note:

Recommended Pulsed Width: 1ns to 30ms
Recommended Power Level Range: 5 mJ/cm² to 20 J/cm²

Physical & Mechanical Properties

0.009 **Thickness (inches):**

0.24 **Thickness (mm):**

2 x 5 **Sheet Size (in):**

50.8 x 127 **Sheet Size (mm):**

Regulatory Compliance

[Compliant](#) **RoHS 2015:**

[View](#) **Certificate of Conformance:**

[Compliant](#) **Reach 247:**

PRODUCT DETAILS

- Industrial Standard Beam Profile Viewing Paper
- Records Beam Shape, Divergence, Mode, and Intensity Profile of Pulsed Lasers
- Suitable for Broadband Sources from UV to IR

ZAP-IT® Laser Alignment Paper is designed to test the characteristics of pulsed laser sources from the ultraviolet to infrared. Beam characteristics are recorded by holding the ZAP-IT® Laser Alignment Paper in the beam path. ZAP-IT® Laser Alignment Paper is ideal for use in alignment applications or with [laser optics](#) including laser beam expanders, optical lenses, apertures, attenuators, or power meters. For continuous wave lasers, use a mechanical chopper, Q-switch, or manually switch the laser on and off rapidly to create short pulses.

Note: It may be difficult to see the beam characteristics when the input beam diameter is 1/4"/6.35mm or less. If so, use a [beam expander](#) or [plano convex lens](#) to magnify the beam diameter. If using a plano convex lens, place ZAP-IT® Laser Alignment Paper at an image distance of 2.5 times longer than the focal length of the lens.